

B.I.G.TM Bone Injection Gun

The World's First User-Friendly I.O. Device



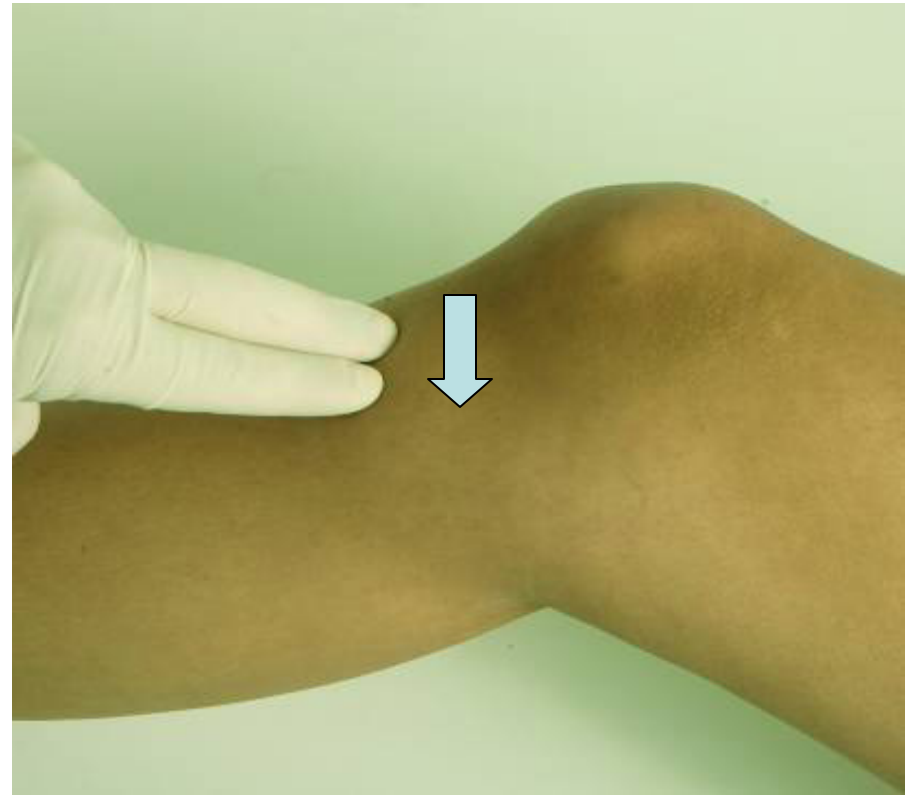
Adult Location (1)

- Place a rolled towel under knee with the foot facing outward.
- Find the outset point:
 - **Tibial Tuberosity**- a rounded protrusion right below the patella
- * Locate the Tuberosity and feel it on your leg ...



Adult Location (2)

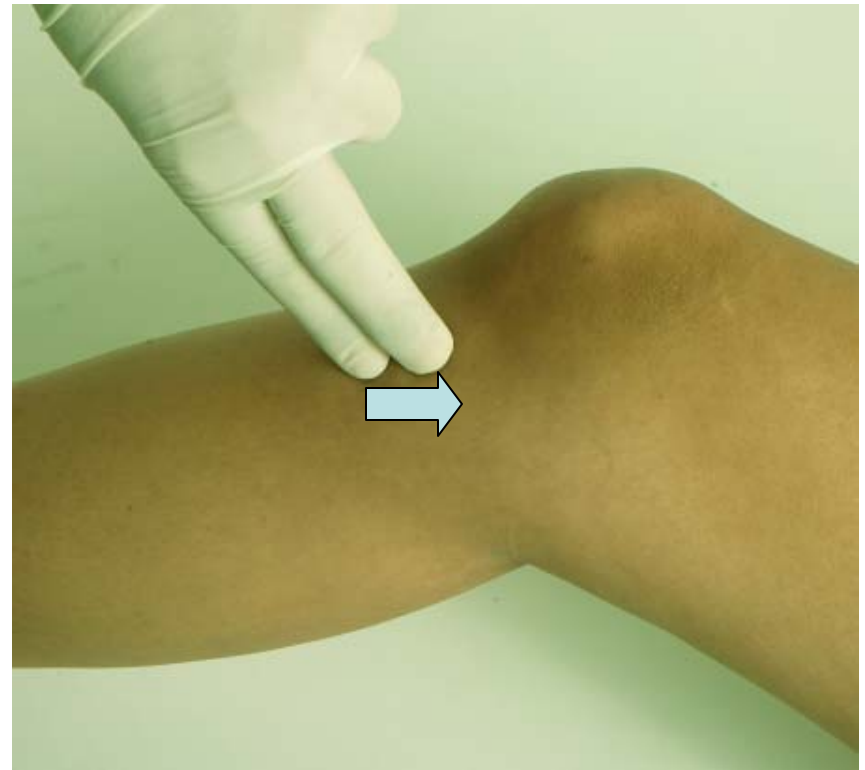
- From the **Tibial Tuberosity** go approximately 2cm (1 inch) to the inner part of the leg to find a flat site - This is the ***Tibial Plateau***.



Adult Location (3)

* From *Tibial plateau*
Go **UP** approx. 1cm (0.5
inch) toward the patella.

* You are looking for the
thinnest portion of the
cortex.

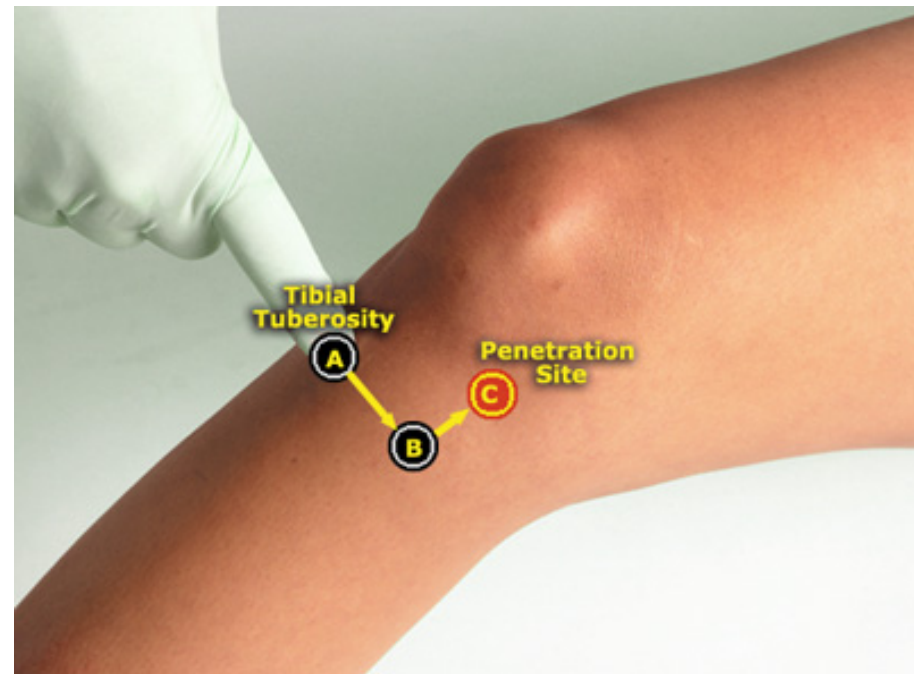


Adult Location (4)

Summary (adult patient):

- From Tibial Tuberosity go approximately 2cm (1") **IN** toward inner leg and approximately 1cm (1/2") **UP** toward patella

*Try to find the insertion site on your leg...



Adult BIG Positioning

- **BLUE** needle, 15 gauge, 2.5cm fixed depth
 - Prep site with alcohol swab*
 - With one hand holding the device firmly, position the BIG at a 90 degree angle to the surface of the skin
- *use aseptic technique throughout



Safety Latch Removal

- With one hand holding the BIG firmly, pull out the safety latch* by squeezing its two sides together
- The safety latch should be at the farthest point of the leg

**Do not discard, it will be used later.*



Triggering the BIG

- While continuing to hold the bottom part firmly against the leg, place two fingers of your other hand under the “winged portion” and the palm of that same hand on the top of the BIG
- Trigger the BIG by *gently* pressing down



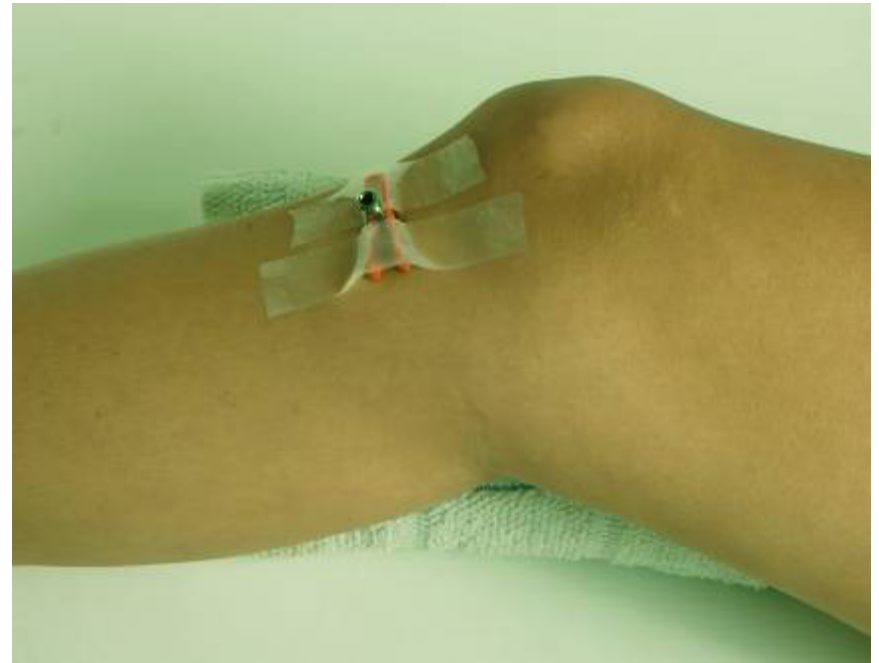
Stylet Trocar Removal

- Remove BIG device
- While holding the hub, pull out the stylet Trocar
- Only the cannula remains in the bone



Cannula Fixation

- Gently slide the safety latch onto the cannula (if there is room) and tape it down to provide additional stability.



Flushing

- Rapidly flush a 10cc bolus of normal saline from either a saline flush syringe or drawn from the IV administration set before injection of fluids or drugs.



Fluid/Meds Administration

- Now you can administer fluids and drugs as required
- ***No stopcock***; IV extension set is preferred

